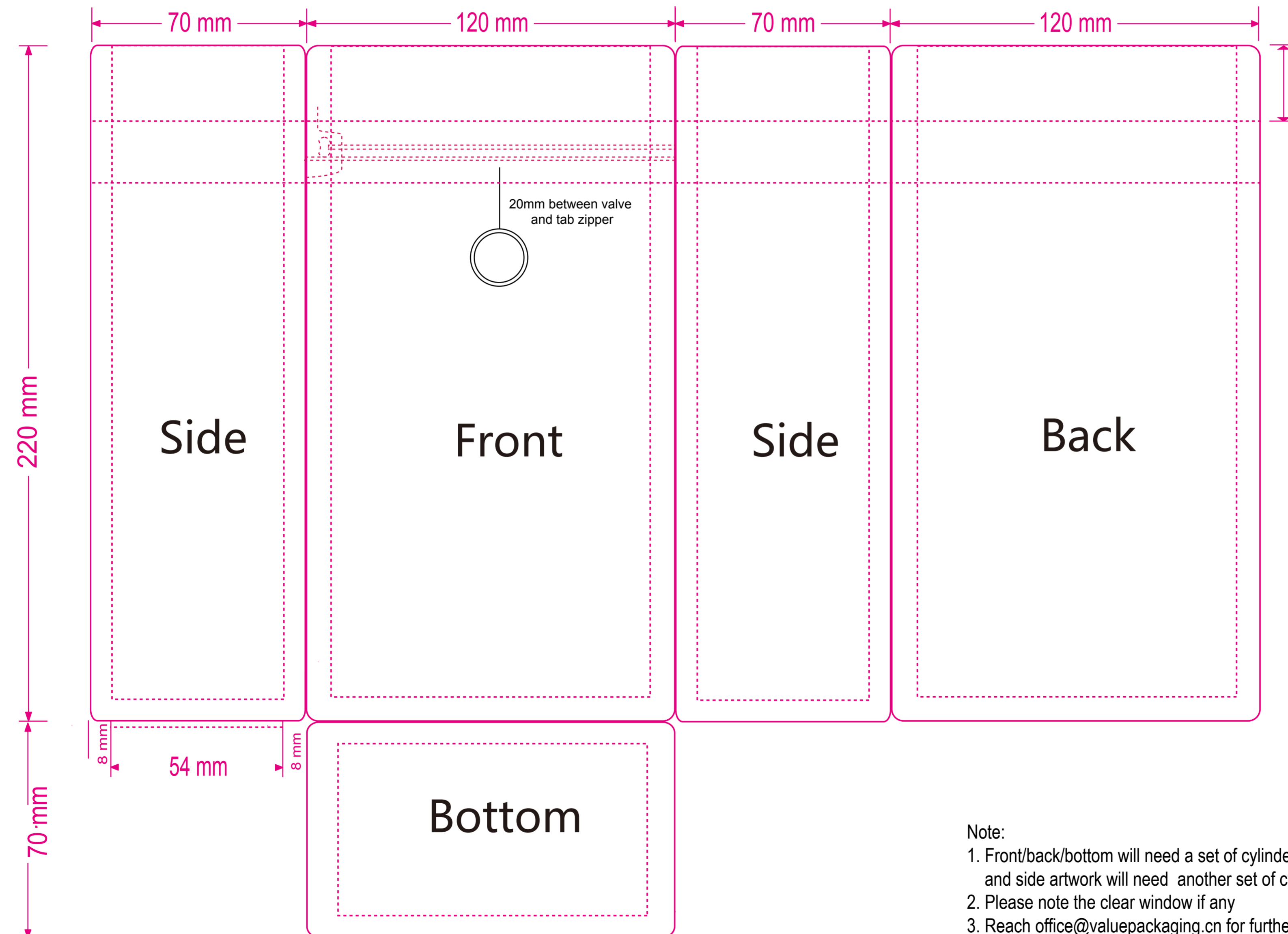


250grams Coffee Beans Package  
BagType: Box Bottom Bag  
Material: Kraft Paper 60gsmVMPET12/LDPE  
W120\*H220+Gusset70  
Edge Seal: 8mm

CopyRight:  
Qingdao Tongli Packaging Products Co., Ltd  
Whatsapp: +86 159 6981 3136  
Email: office@valuepackaging.cn  
Web: www.valuepackaging.cn/  
Reach us if you have any questions



- Note:
1. Front/back/bottom will need a set of cylinders, and side artwork will need another set of cylinders
  2. Please note the clear window if any
  3. Reach office@valuepackaging.cn for further assistance if any questions.